

**WINDSOR PARK**  
URBAN LIVING



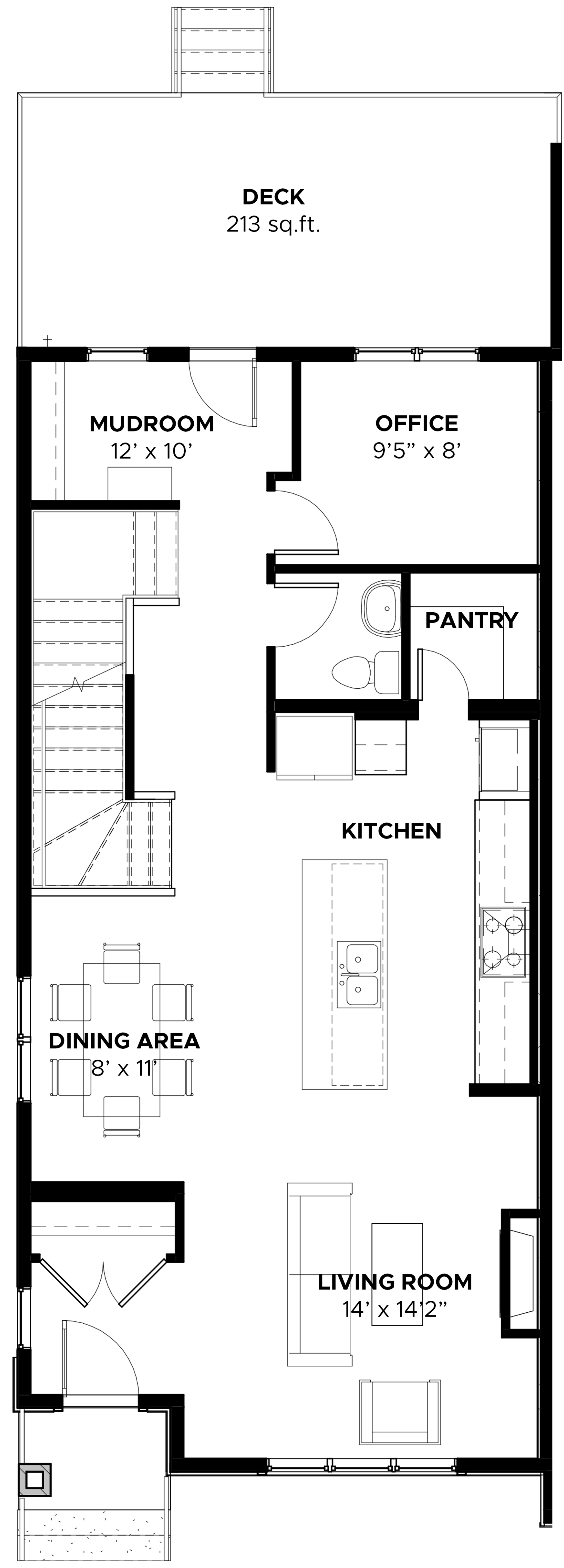
**RENOVA**  
HOMES | RENOVATIONS



**SEMI-DETACHED**  
1,891 sq.ft.

-  3+1 BEDROOMS
-  2.5 +1 BATHROOMS
-  2 CAR GARAGE

719 - 53rd AVE SW



**MAIN FLOOR PLAN**  
909 sq.ft.

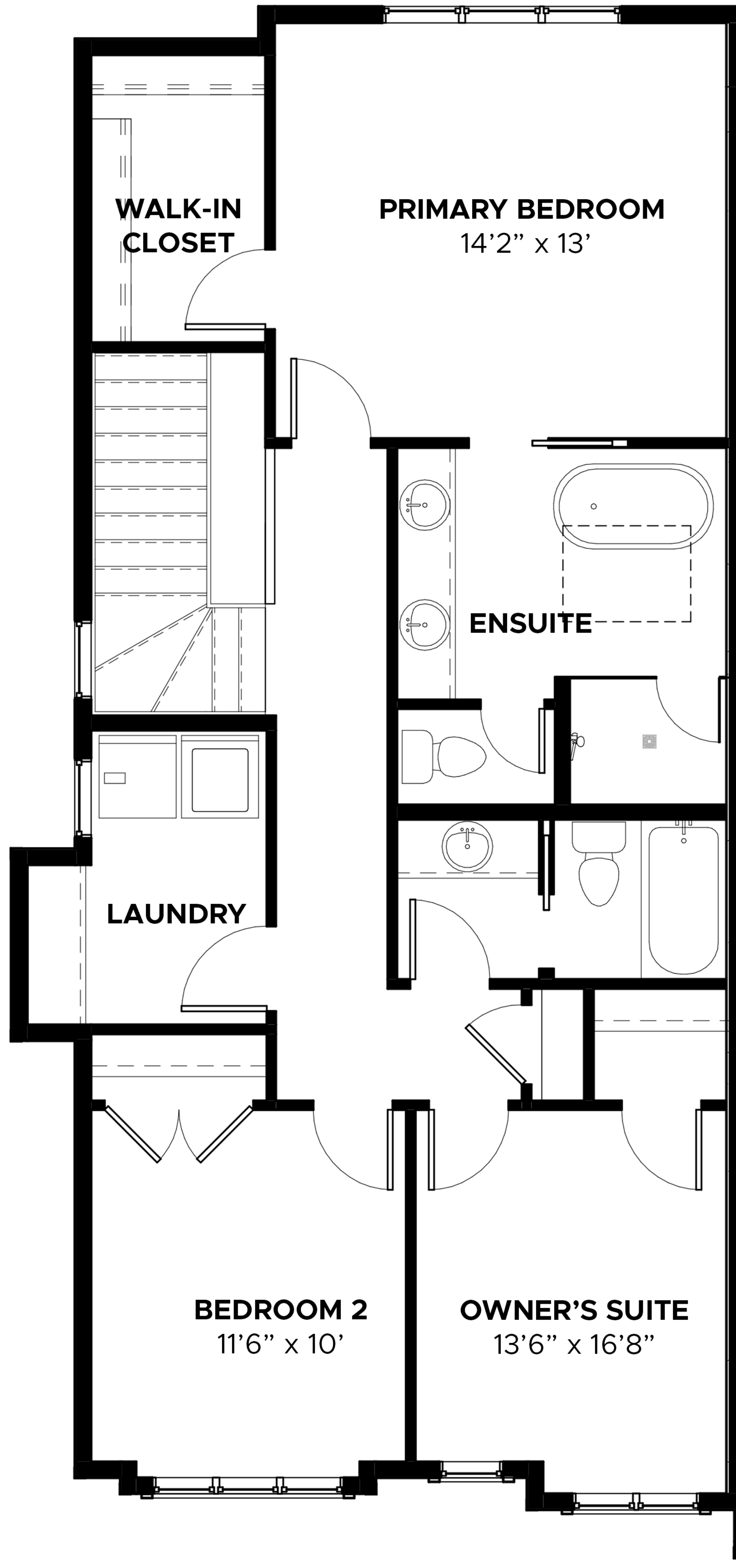
Disclaimer: The design is published by RENOVA HOMES & Renovations Ltd. All rights reserved including the reproduction whole or in part. All information, renderings, images are an artists rendition only and may not be reflective of the final product. Dimensions, square footages and features are approximate and may change without notice.



**SEMI-DETACHED**  
1,891 sq.ft.

- 3 BEDROOMS
- 2.5 +1 BATHROOMS
- 2 CAR GARAGE

719 - 53rd AVE SW



UPPER FLOOR PLAN  
982 sq.ft.

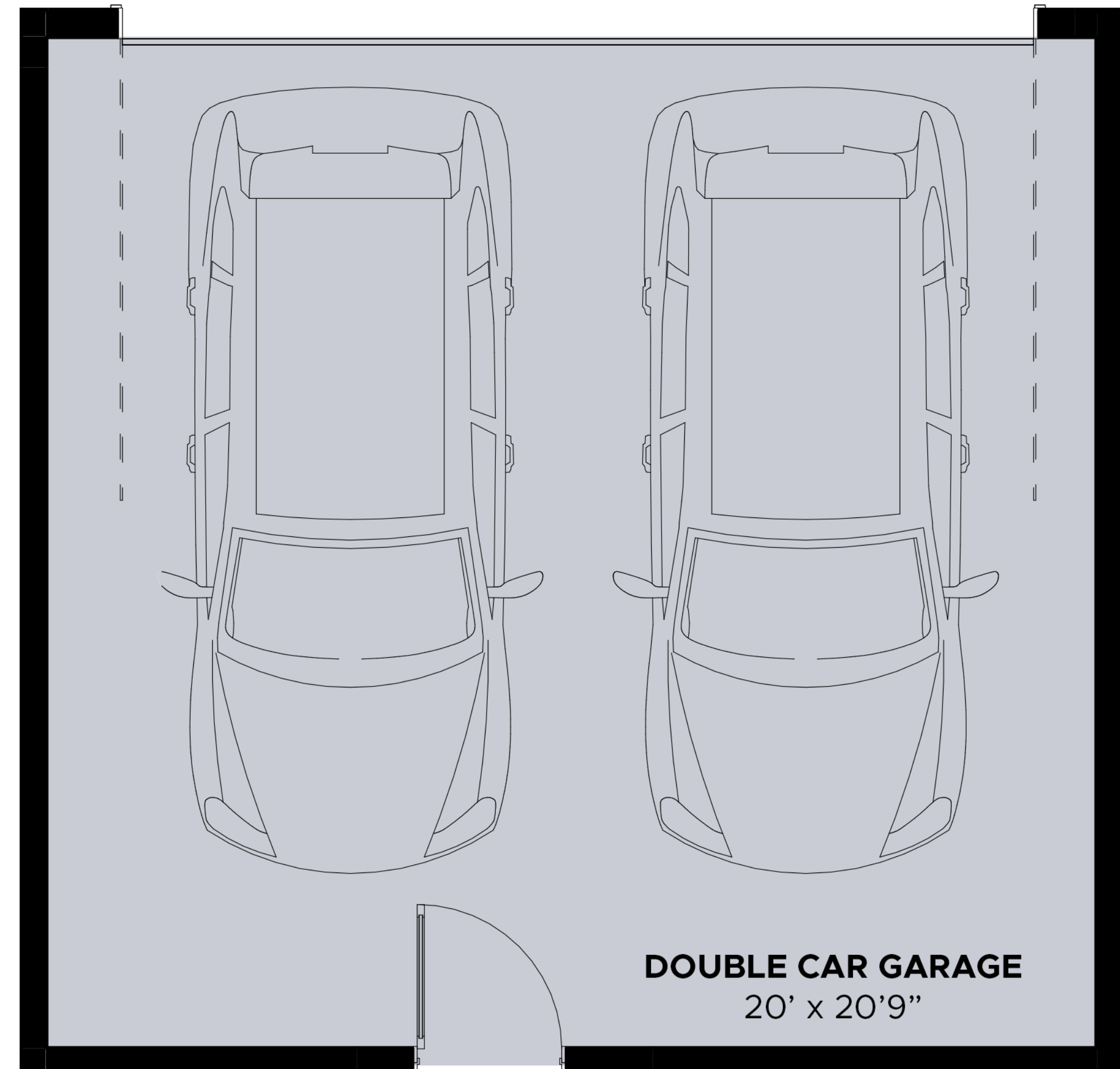
Disclaimer: The design is published by RENOVA HOMES & Renovations Ltd. All rights reserved including the reproduction whole or in part. All information, renderings, images are an artists rendition only and may not be reflective of the final product. Dimensions, square footages and features are approximate and may change without notice.



**SEMI-DETACHED**  
1,891 sq.ft.

- 3 BEDROOMS
- 2.5 +1 BATHROOMS
- 2 CAR GARAGE

719 - 53rd AVE SW



DOUBLE CAR  
GARAGE

Disclaimer: The design is published by RENOVA HOMES & Renovations Ltd. All rights reserved including the reproduction whole or in part. All information, renderings, images are an artists rendition only and may not be reflective of the final product. Dimensions, square footages and features are approximate and may change without notice.