


WINDSOR PARK
URBAN LIVING



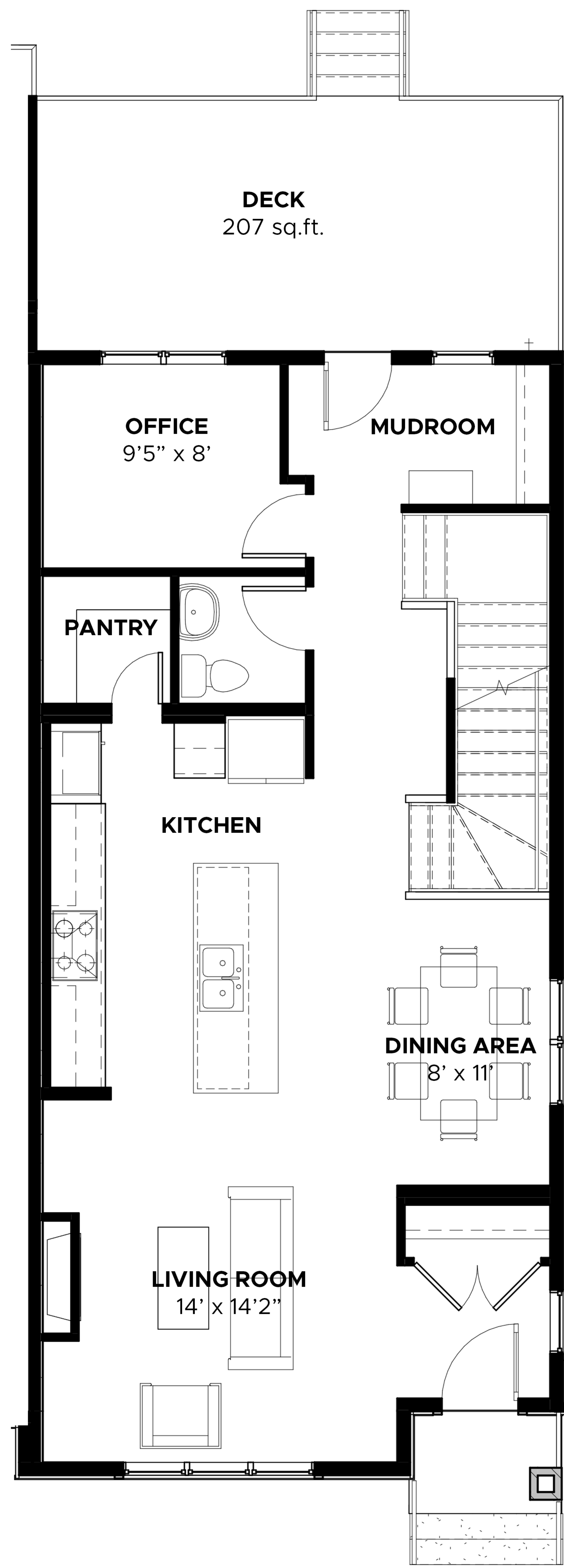
RENOVA
HOMES | RENOVATIONS



SEMI-DETACHED
1,891 sq.ft.

-  3+1 BEDROOMS
-  2.5 +1 BATHROOMS
-  2 CAR GARAGE

717 - 53rd AVE SW



MAIN FLOOR PLAN
909 sq.ft.

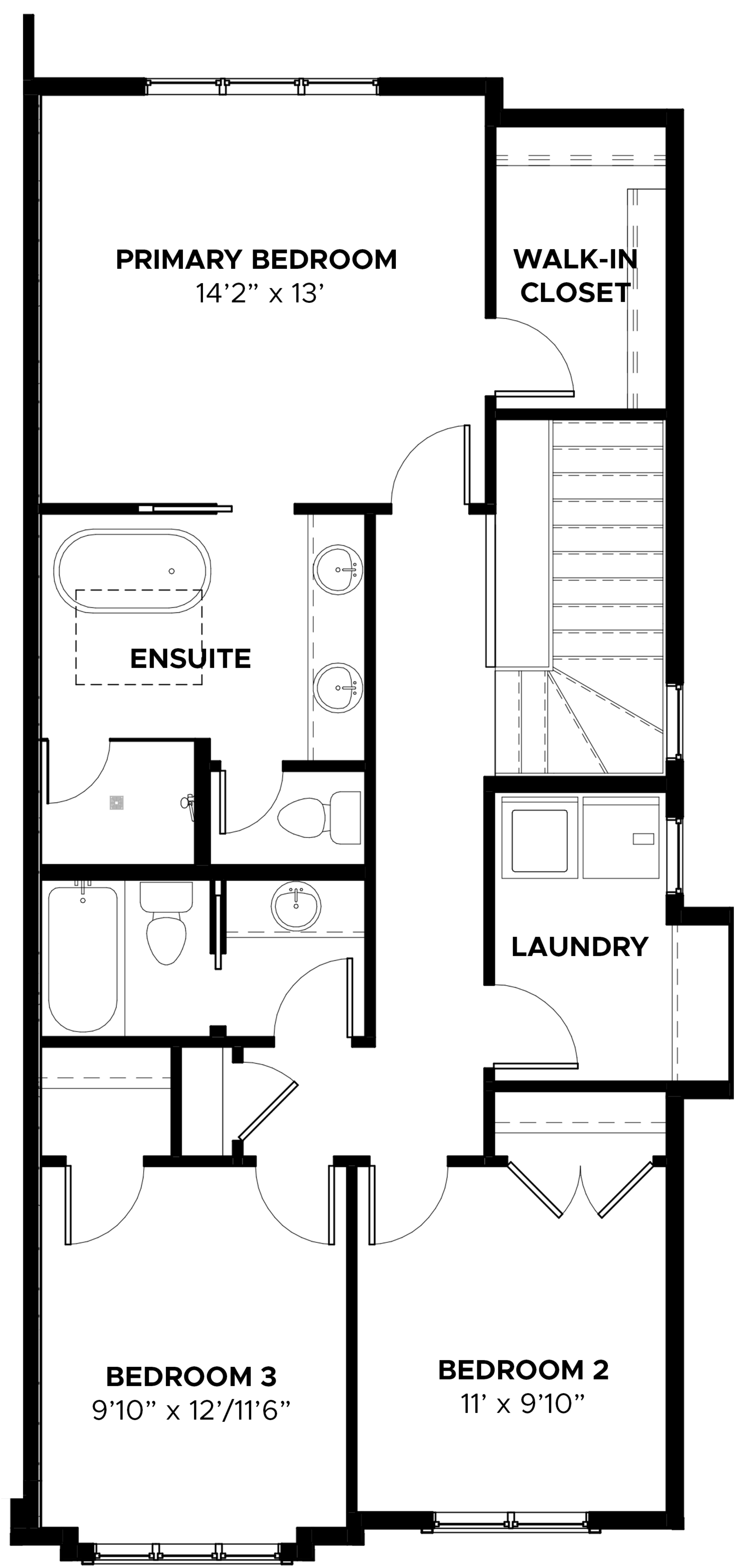
Disclaimer: The design is published by RENNOVA HOMES & Renovations Ltd. All rights reserved including the reproduction whole or in part. All information, renderings, images are an artists rendition only and may not be reflective of the final product. Dimensions, square footages and features are approximate and may change without notice.



SEMI-DETACHED
1,891 sq.ft.

-  3 BEDROOMS
-  2.5 +1 BATHROOMS
-  2 CAR GARAGE

717 - 53rd AVE SW



UPPER FLOOR PLAN
982 sq.ft.

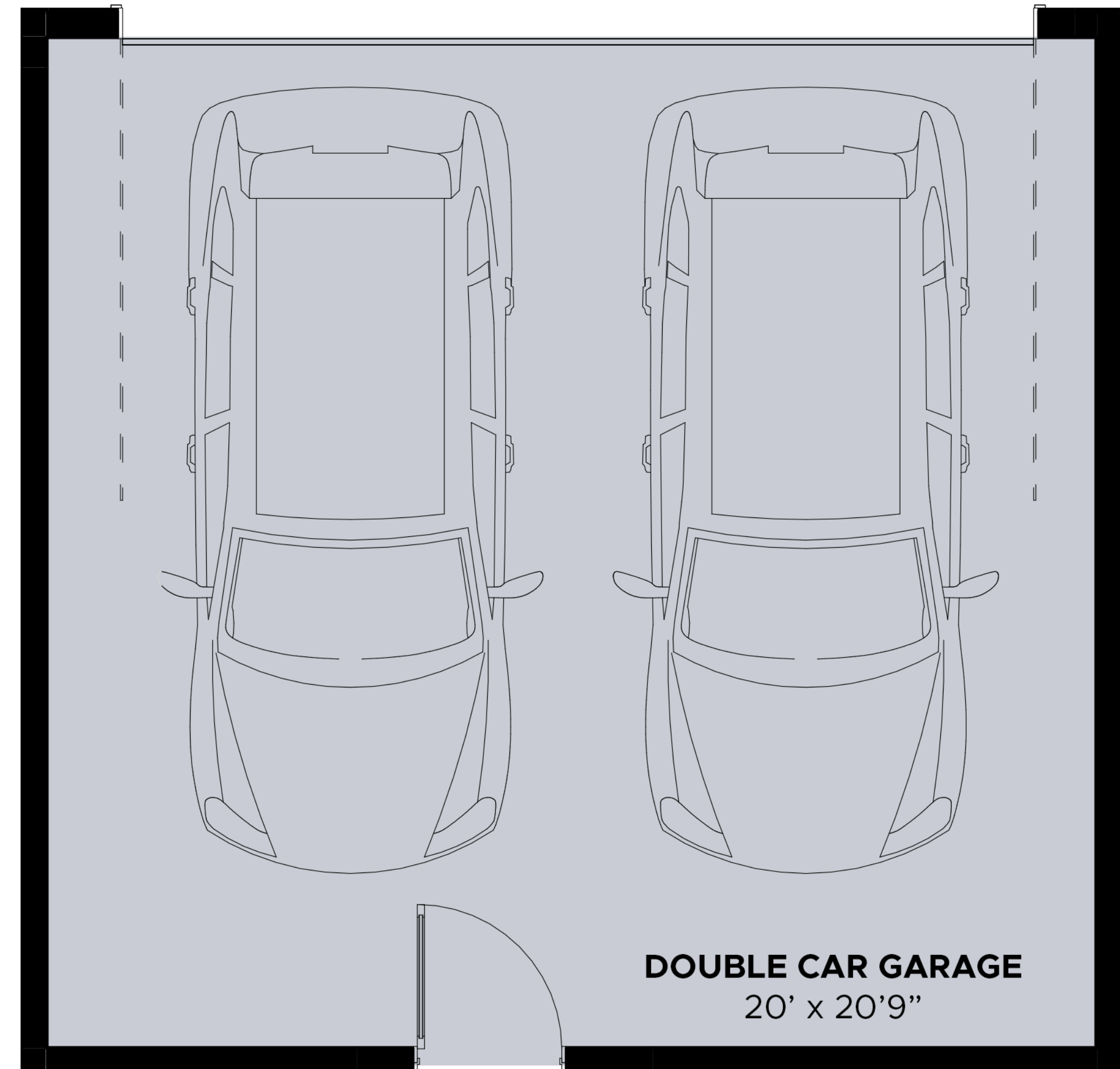
Disclaimer: The design is published by RENNOVA HOMES & Renovations Ltd. All rights reserved including the reproduction whole or in part. All information, renderings, images are an artists rendition only and may not be reflective of the final product. Dimensions, square footages and features are approximate and may change without notice.



SEMI-DETACHED
1,891 sq.ft.

- 3 BEDROOMS
- 2.5 +1 BATHROOMS
- 2 CAR GARAGE

717 - 53rd AVE SW



DOUBLE CAR
GARAGE

Disclaimer: The design is published by RENOVA HOMES & Renovations Ltd. All rights reserved including the reproduction whole or in part. All information, renderings, images are an artists rendition only and may not be reflective of the final product. Dimensions, square footages and features are approximate and may change without notice.