

**WINDSOR PARK**
URBAN LIVING



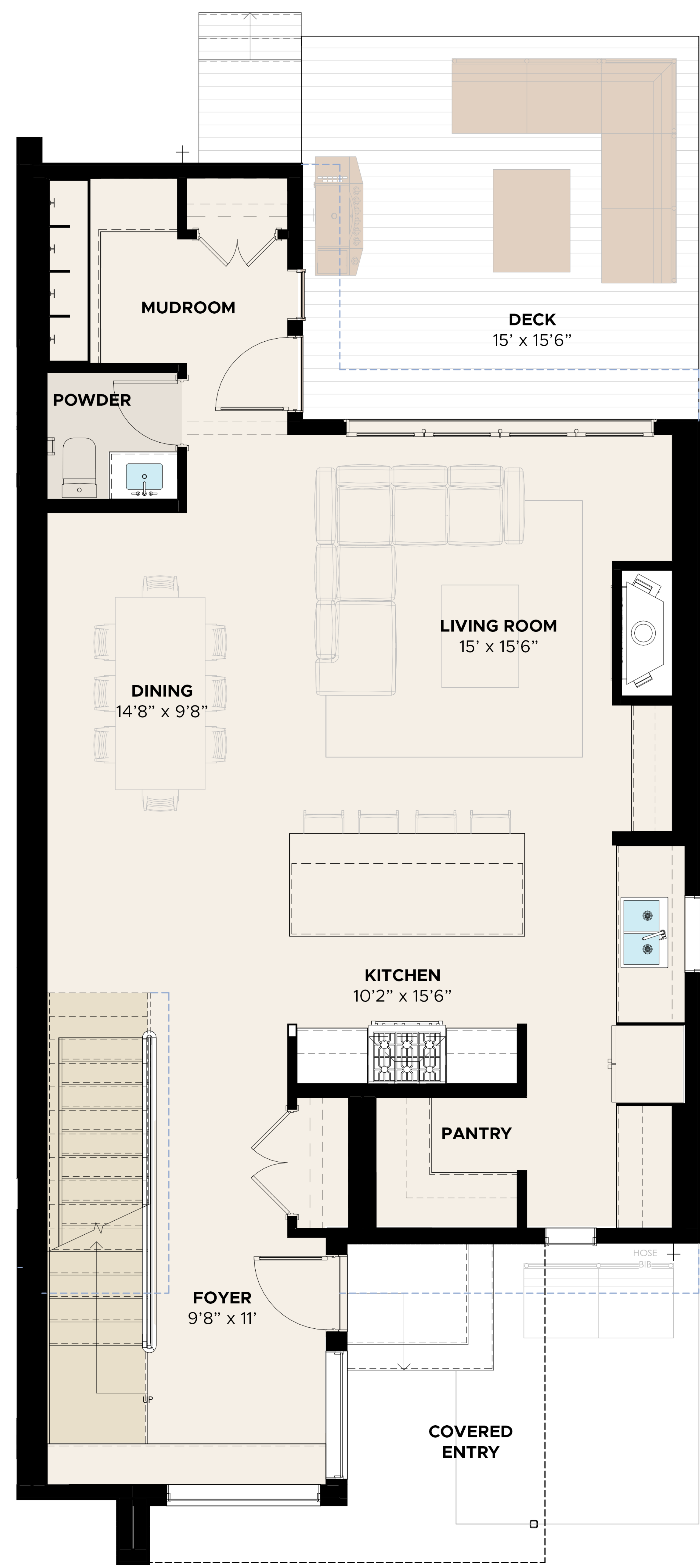
RENOVA
HOMES | RENOVATIONS



SEMI-DETACHED
2,102 sq.ft.

-  3+1 BEDROOMS
-  2.5 +1 BATHROOMS
-  2 CAR GARAGE

725 - 53rd AVE SW



MAIN FLOOR PLAN
1,058 sq.ft.

Disclaimer: The design is published by RENOVA HOMES & Renovations Ltd. All rights reserved including the reproduction whole or in part. All information, renderings, images are an artists rendition only and may not be reflective of the final product. Dimensions, square footages and features are approximate and may change without notice.



SEMI-DETACHED
2,102 sq.ft.

- 3+1 BEDROOMS
- 2.5 +1 BATHROOMS
- 2 CAR GARAGE

725 - 53rd AVE SW



SECOND FLOOR PLAN
1,044 sq.ft.

Disclaimer: The design is published by RENNOVA HOMES & Renovations Ltd. All rights reserved including the reproduction whole or in part. All information, renderings, images are an artists rendition only and may not be reflective of the final product. Dimensions, square footages and features are approximate and may change without notice.



SEMI-DETACHED
2,102 sq.ft.

- 3+1 BEDROOMS
- 2.5 +1 BATHROOMS
- 2 CAR GARAGE

725 - 53rd AVE SW



DEVELOPMENT
BASEMENT
798 sq.ft.

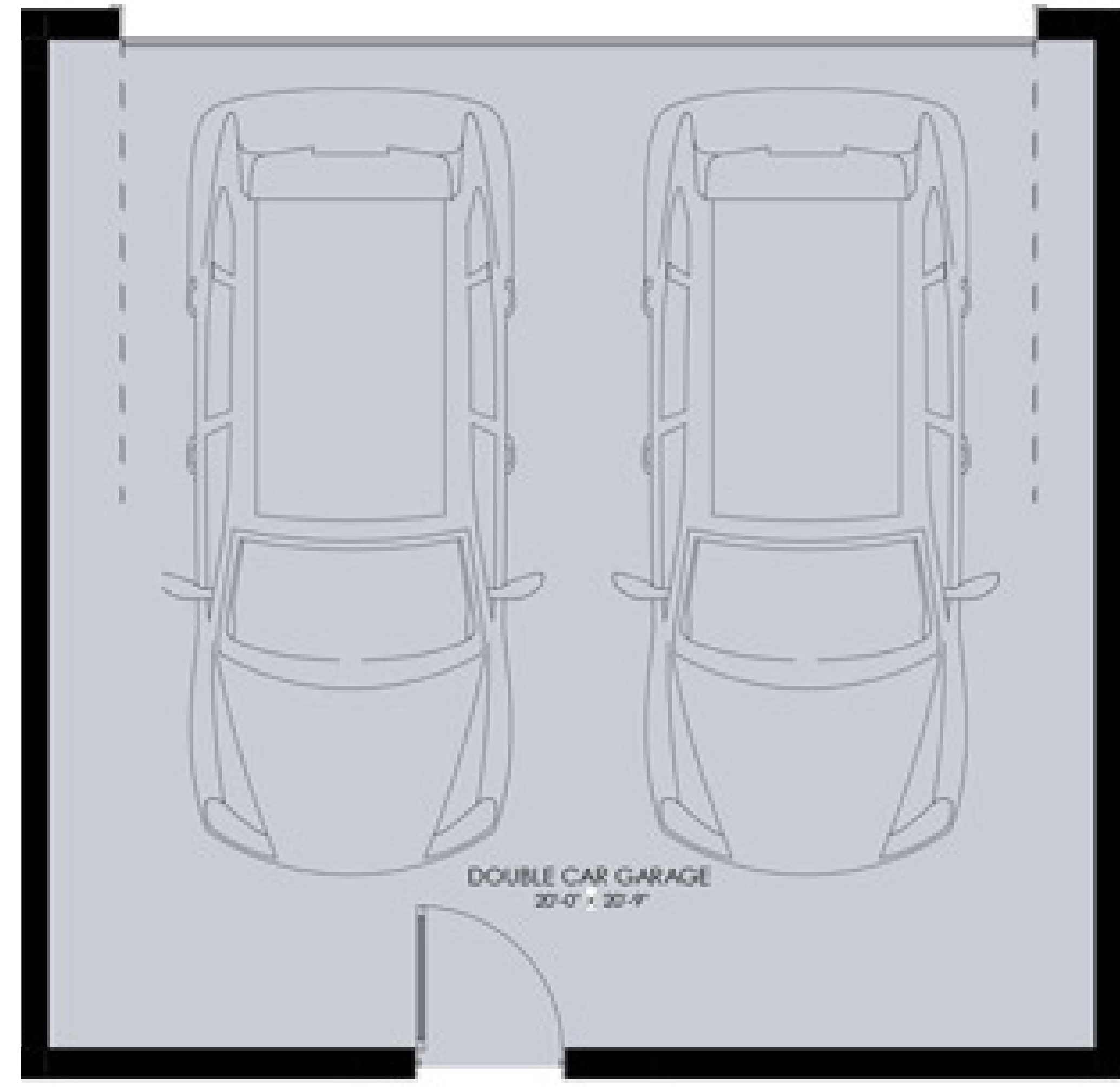
Disclaimer: The design is published by RENOVA HOMES & Renovations Ltd. All rights reserved including the reproduction whole or in part. All information, renderings, images are an artists rendition only and may not be reflective of the final product. Dimensions, square footages and features are approximate and may change without notice.



SEMI-DETACHED
2,102 sq.ft.

- 3+1 BEDROOMS
- 2.5 +1 BATHROOMS
- 2 CAR GARAGE

725 - 53rd AVE SW



DOUBLE CAR GARAGE

Disclaimer: The design is published by RENOVA HOMES & Renovations Ltd. All rights reserved including the reproduction whole or in part. All information, renderings, images are an artists rendition only and may not be reflective of the final product. Dimensions, square footages and features are approximate and may change without notice.