

the Altadore

50 Crimson Ridge Rise
2,674 sq.ft.

FALL 2026 POSSESSION



OPTIONS INCLUDED

- Estate style, West backing lot with Mountain Views in a quiet cul-de-sac
- Urban architecture to the exterior with Hardie Board and Brick
- Over-sized walk-through mud room/pantry
- Full sized bathroom to the main floor
- Open kitchen with upgraded KitchenAid Appliances
- Gas fireplace with tile
- Open to above in the dining room to second floor
- 3 bedrooms up with large walk-in closets
- Upper floor bonus room
- Primary space features spacious bedroom, en-suite and walk-in closet
- Interior design upgrades in tile, lighting, and countertops
- Oversized double garage with window
- Full width rear deck with stairs to grade
- Full basement development with an additional 2 bedrooms, full bathroom, and rec area



SHOWHOME

Melanie Law | Area Sales Manager

97 Osprey Hill Way SW

Calgary, Alberta

(587) 500-2801

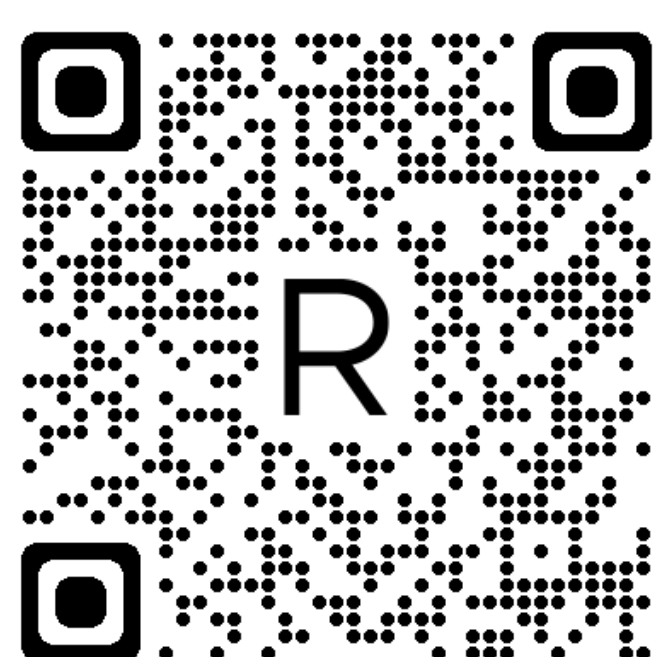
newhomes@renovaluxury.com

SHOWHOME HOURS

Monday-Wednesday 2-8PM

Thursday-Friday Closed

Saturday-Sunday 12-5PM



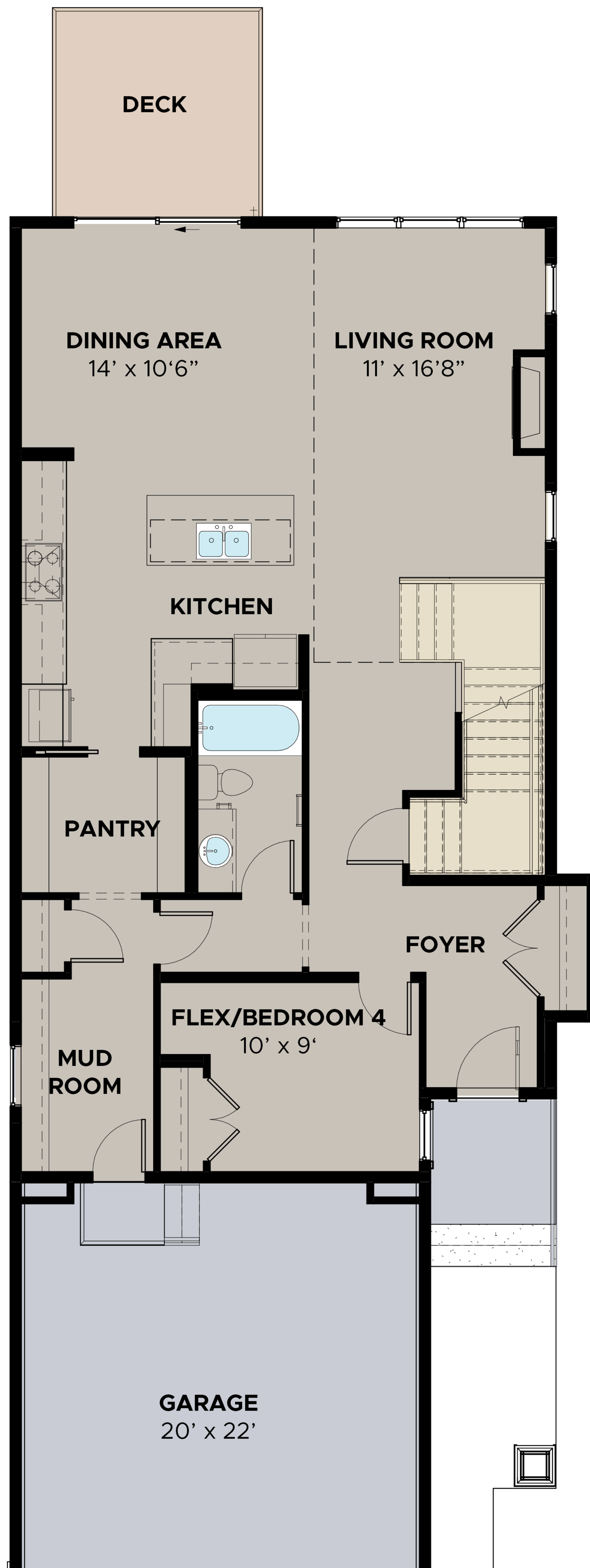
Disclaimer: The design is published by RENOVA HOMES & Renovations Ltd. All rights reserved including the reproduction whole or in part. All information, renderings, images are an artists rendition only and may not be reflective of the final product. Dimensions, square footages and features are approximate and may change without notice.

CRIMSON
Ridge

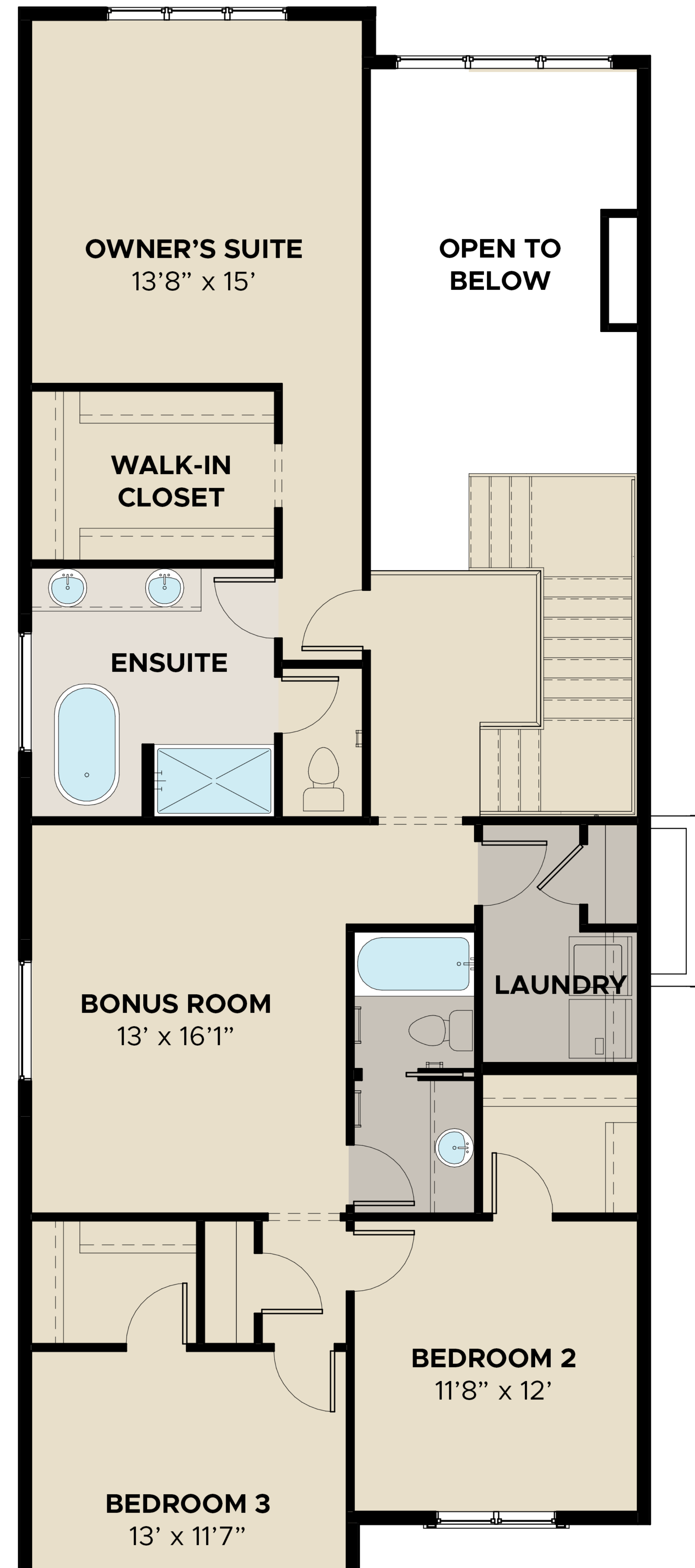
RENOVA
HOMES | RENOVATIONS

renovahomes.ca

MAIN FLOOR PLAN
1,186 sq.ft.



UPPER FLOOR PLAN
1,488 sq.ft.



Altadore

Disclaimer: The design is published by RENOVA HOMES & Renovations Ltd. All rights reserved including the reproduction whole or in part. All information, renderings, images are an artists rendition only and may not be reflective of the final product. Dimensions, square footages and features are approximate and may change without notice.